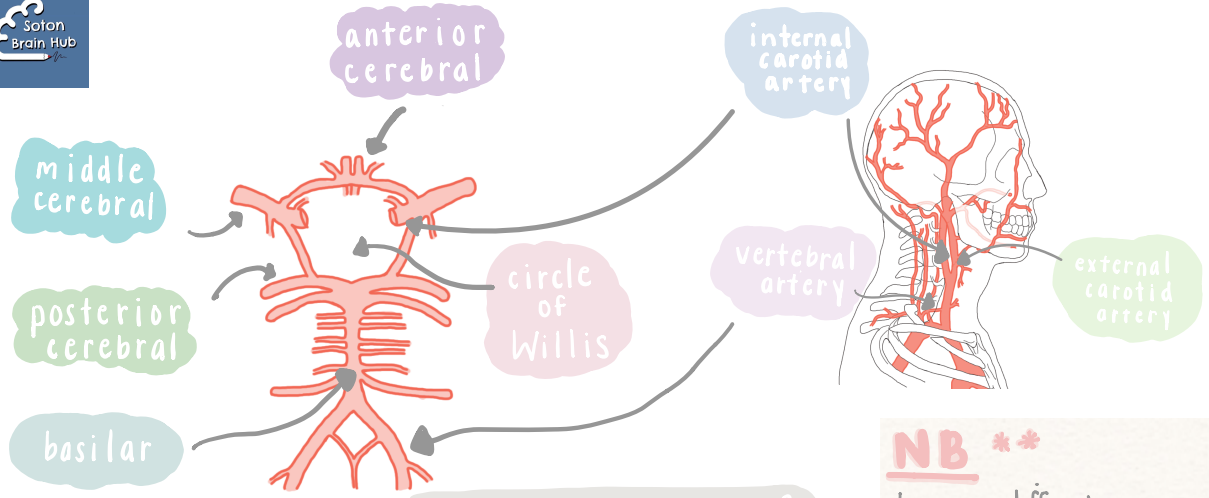
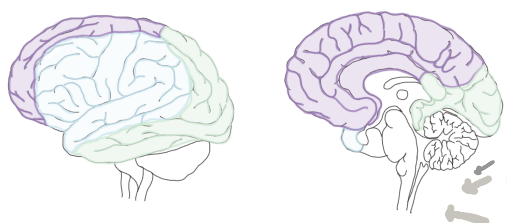


blood supply to the brain



Circle of Willis
 • an anastomotic system of arteries at the base of the brain

What supplies Where?



NB **
 because different arteries supply different areas (which each have different functions) the pathologies present differently...

- anterior cerebral
- posterior cerebral
- middle cerebral

stroke

Occurs when an area of the brain loses its blood supply, resulting in reduced function of the part of the body that the injured brain controls

F	A	S	T
face drooping	arm weakness	speech difficulty	time to dial 999

- symptoms - **FAST**
- types - **ischaemic** (most common)
- **haemorrhagic**

***NB** Transient Ischaemic Attack (TIA): stroke symptoms that resolve within 24 hours of onset.

