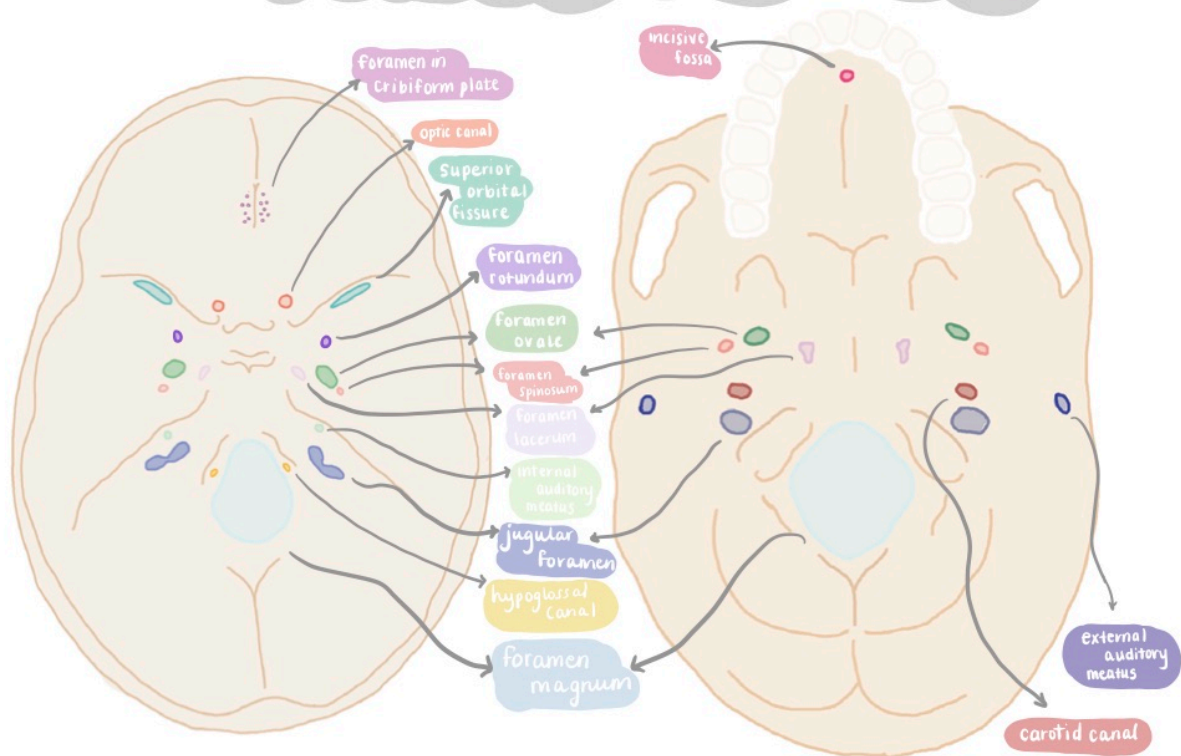


Cranial Nerves



CN	Exit foramen in skull	General function
I – Olfactory	Foramina in cribriform plate	Smell
II - Optic	Optic canal	Sight
III – Oculomotor	Superior orbital fissure	All eye movements except those performed by CN IV + VI, pupil constriction, lens accommodation
IV - Trochlear	Superior orbital fissure	Innervates superior oblique muscle (abduction, depression, internal rotation of the eye)
V – Trigeminal	<ul style="list-style-type: none"> Superior orbital fissure Foramen rotundum Foramen ovale 	Motor innervation of muscles of mastication Sensory to face, nose, mouth
VI - Abducent	Superior orbital fissure	Innervates lateral rectus muscle (abduction of the eye)
VII - Facial	Internal auditory meatus Exit: Stylomastoid foramen	Motor to face muscles Sensory to anterior 2/3 of tongue
VIII – Vestibulocochlear	Internal auditory meatus	Balance, hearing
IX - Glossopharyngeal	Jugular foramen	Motor to stylopharyngeus Sensory to pharynx, larynx
X – Vagus	Jugular foramen	Motor to palate, pharynx, larynx Sensory to pharynx, larynx
XI – Spinal accessory	Entrance: foramen magnum Exit: jugular foramen	Movement of head and shoulders
XII - Hypoglossal	Hypoglossal canal	Motor to tongue muscles