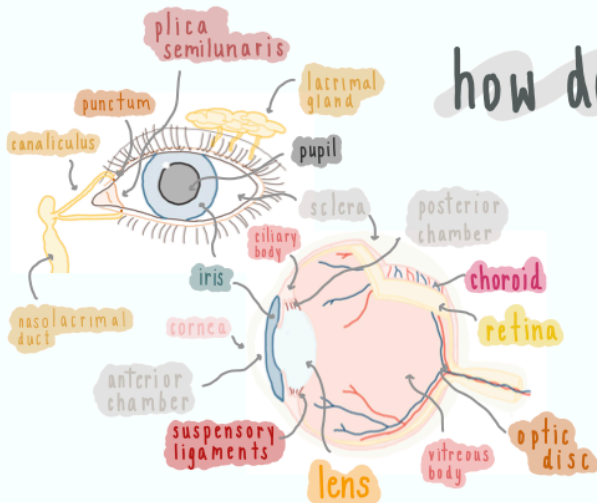
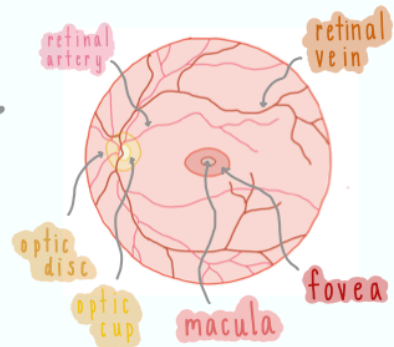


ANATOMY OF THE eye



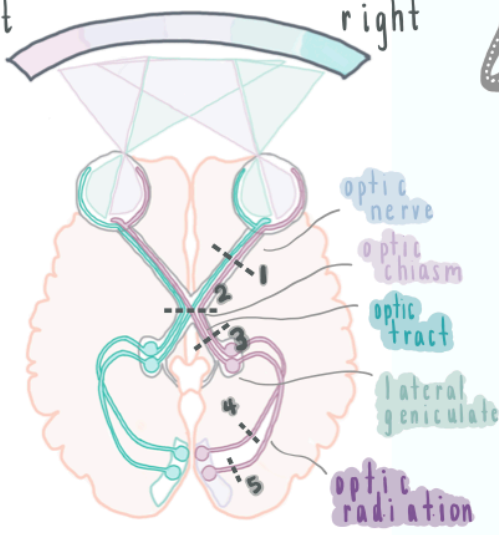
how do we look closer?

OPHTHALMOSCOPY



visual fields

left right



what can go WRONG

- | | | |
|---|--|--------------------------------|
| 1 | | total blindness in right eye |
| 2 | | bitemporal hemianopia |
| 3 | | left homonymous hemianopia |
| 4 | | left homonymous quadrantanopia |
| 5 | | |

